

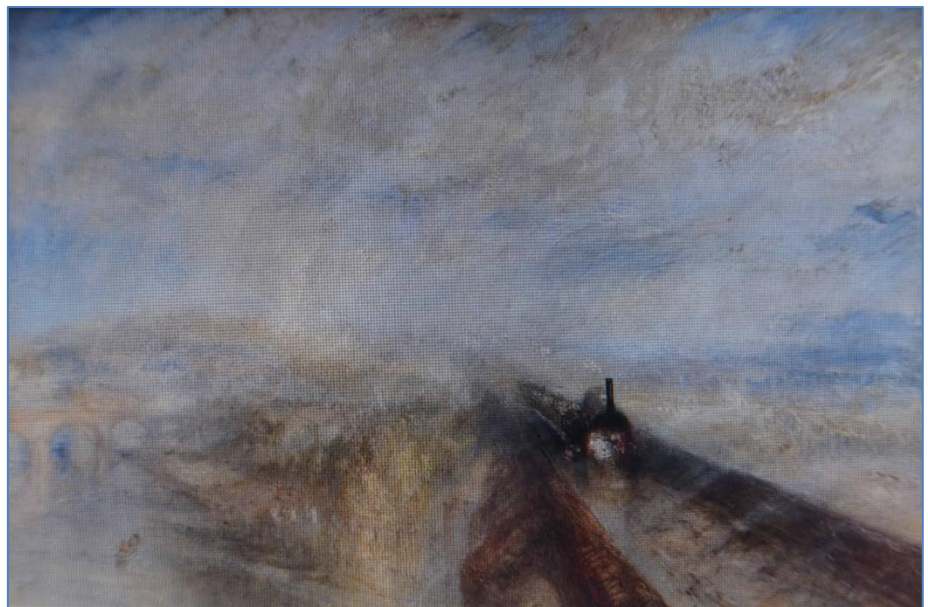
Art in the Park

Why not take a sketch book into the park and draw or paint? There are so many different views and subjects. There are the views of the Pump Room and the lake on the east side of the park, there are people sitting at the Central Cross cafe or children enjoying the play area. If you go to the west side of the park there are the boathouse, the community bridge, the lake, the trees, and views over to the Cotswold hills. Wherever you go, there is something different.

Quick sketches in the park can be turned into finished paintings (using different painting media), lino cuts, collages or prints in the classroom or at home. Each artist [has] develops their own style [which they develop], which may change over their lifetime, and their own way of interpreting a scene. Why not look at the work of several famous artists to see how they approached a landscape scene? Here are some suggestions.

J M W Turner (1775-1851)

Landscape artist, print-maker and water-colourist who was influenced by natural phenomena such as sunlight, storms, rain and fog. Many of his early works were detailed, but his later works – such as this painting, 'Rain, Steam and Speed' (1844) – were almost abstract.



John Constable (1776-1837)

A landscape artist who studied nature and made many studies of the sky and atmospheric conditions which he used to great effect in his paintings. He also liked to include scenes of ordinary life in his landscapes, as in this painting, 'The Hay Wain' (1821).



Claude Monet (1840-1926)

A founder of the French Impressionist movement which was named after this picture, 'Impression, Sunrise' (1872). The impressionists often worked 'en plein air' (which means painting outside, looking at the scene), so keen were they to capture the colour and light



of the landscape before them. Monet would paint the same scene, such as his water lilies or haystacks, to capture the changing light or the passing of the seasons.

Paul Nash (1889-1946)

An important British landscape painter and war artist in the 20th century who turned to Surrealism later in his career, as demonstrated by this picture, 'Landscape from a Dream' (1936-38).



To find information about contemporary landscape artists, please see the website <https://mymodernmet.com/contemporary-landscape-painting>

www.friendsofpittville.org.uk

Registered charity 1146790

